

MAGTRACE® FOR AXILLARY MARKING IN DCIS PATIENTS

M.D. LINA PANKRATJEVAITE

PROF., PH.D., M.D. TOVE FILTENBORG TVEDSKOV

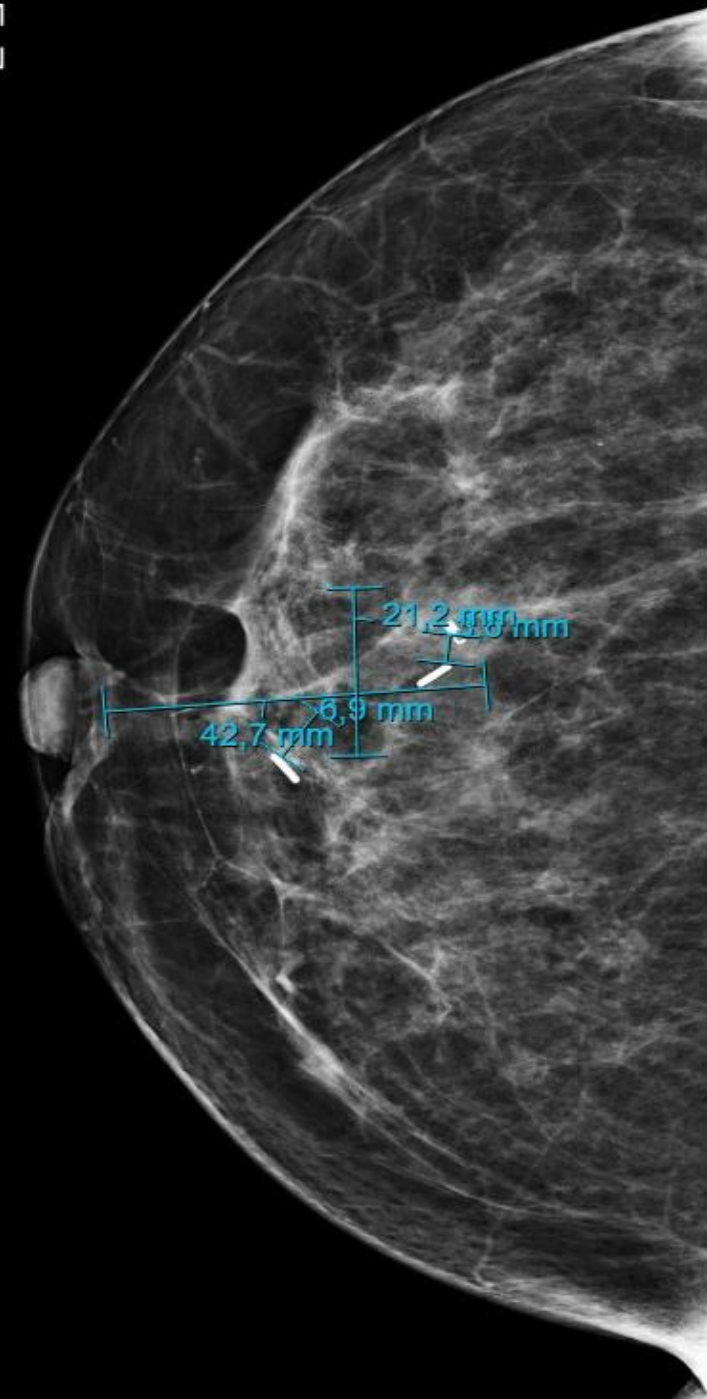


Challenge in Treating DCIS

- ▶ **Distinguishing between non-invasive DCIS and invasive cancer is key.**
- **Traditional approach:** Mastectomy/BCS and SLNB for all patients, even when not needed.
- ▶ **New Approach**
 - **Delayed SLNB:** Only patients needing node removal undergo surgery.
 - **Magtrace®:** Marks SLN.
 - **Pathological analysis:** Determines if SLN removal is necessary.

Delayed SLNB

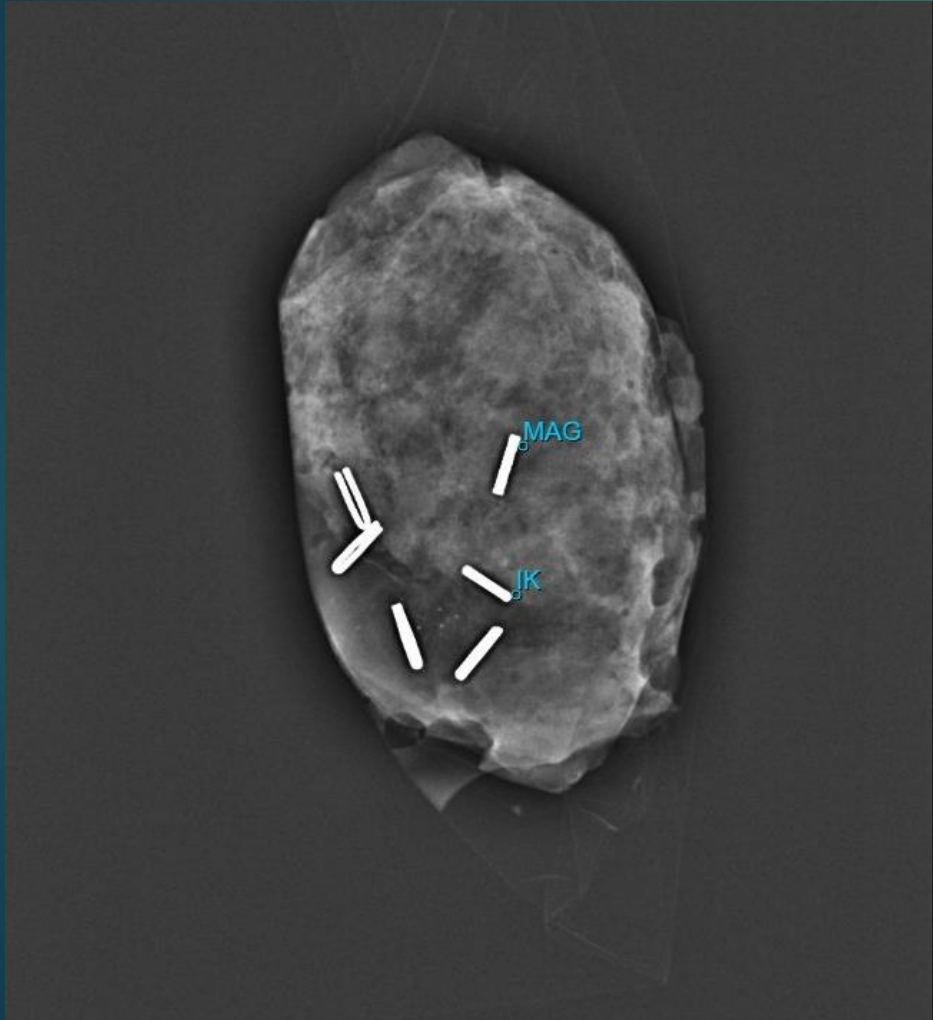
- ▶ 43 y/o woman
- ▶ Tender right breast
- ▶ Past medical history non-significant
- ▶ Physical examination – ia
- ▶ Mammogram:
25mm & 17mm BIRADS 3 calcifications under PAC
- ▶ **Biopsy:** DCIS Van Nuys gr 3
- ▶ **Surgery:**
BCS + radioactive seed + Magseed + Magtrace®



Magtrace® injection

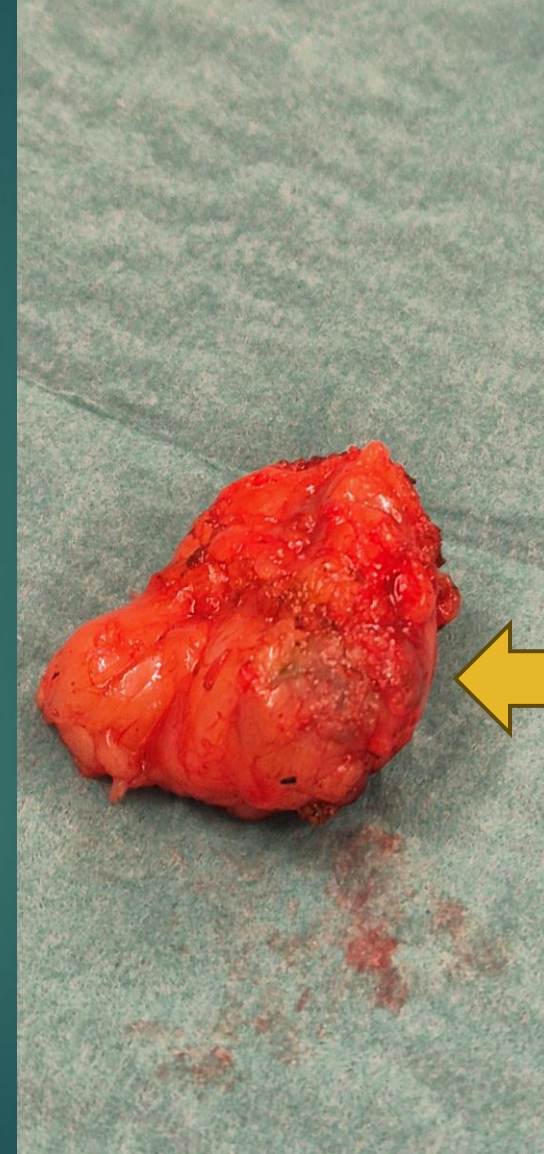
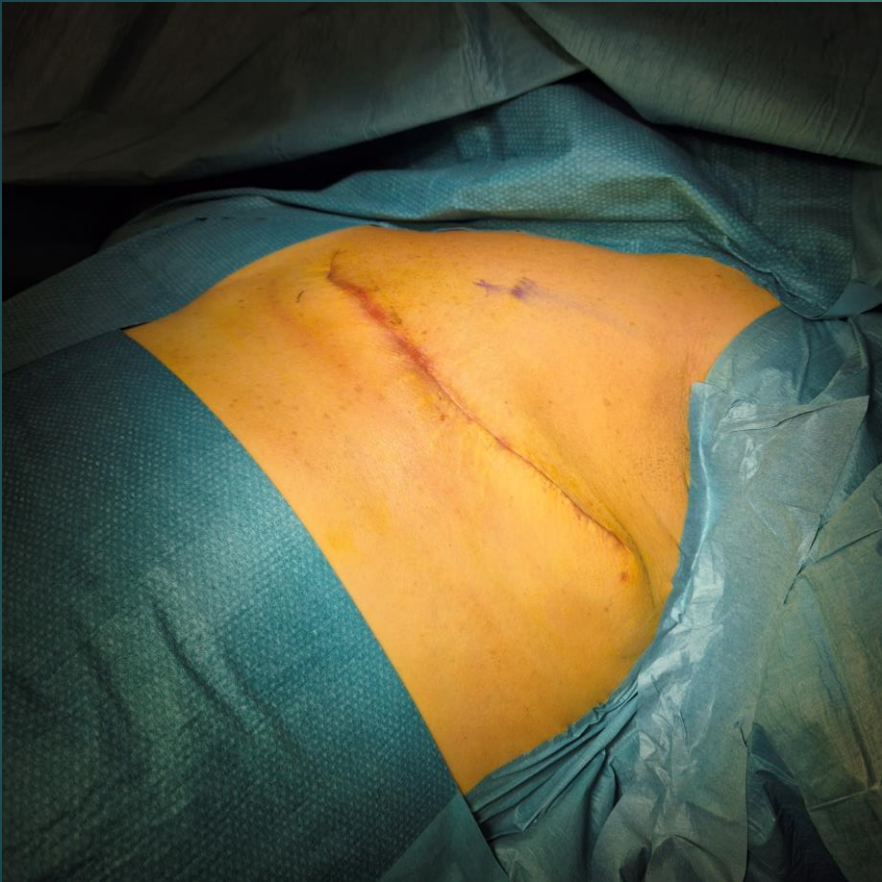


Surgery results:



DCIS Van Nuys gr 3 – radically removed

Magtrace® - SN staging



Magtrace®

SN staging





Photo copyright - <https://www.endomag.com/resources/faqs/magtrace/>